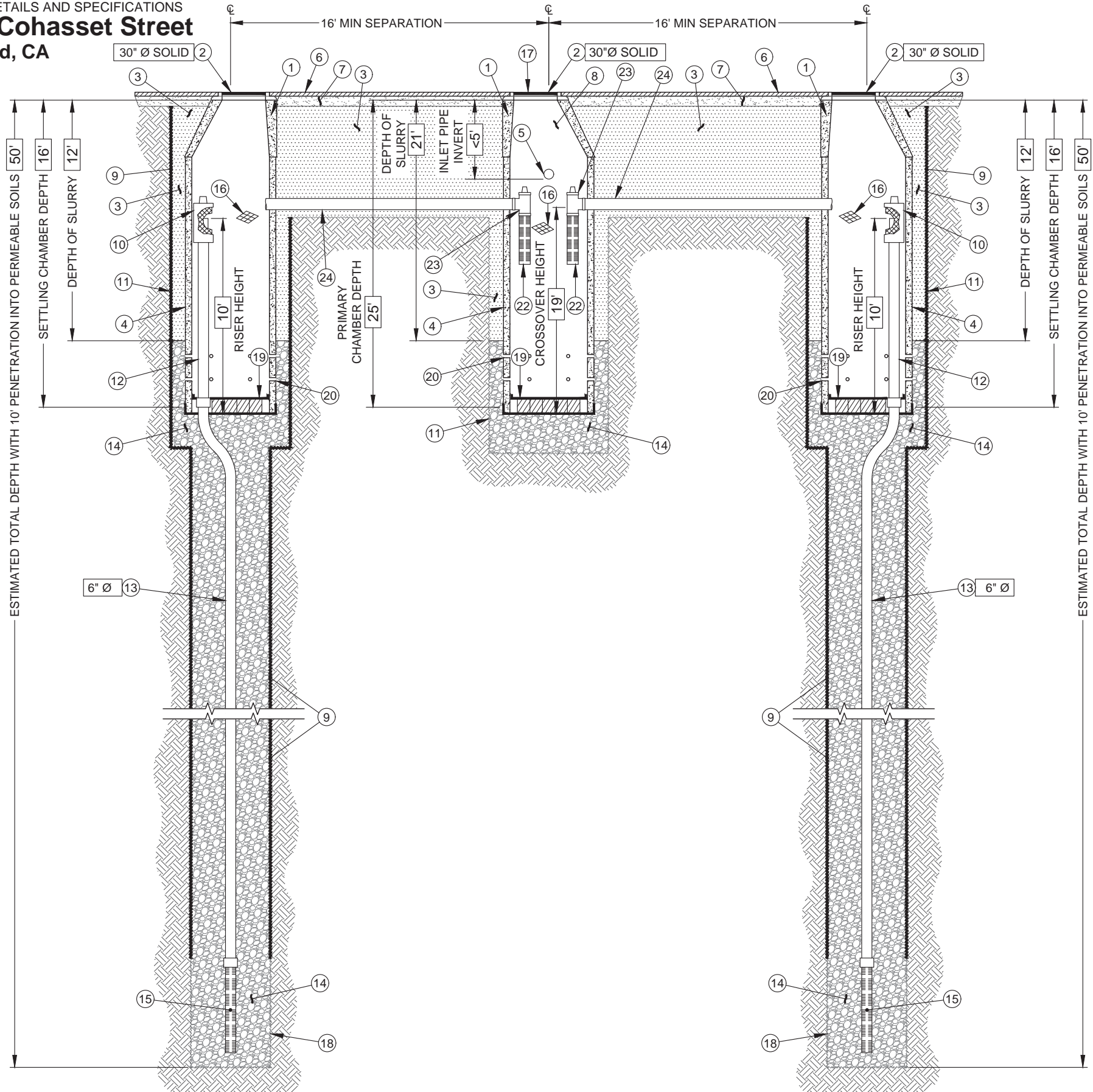


The MaxWell® Plus for LASAN*

DRAINAGE SYSTEM DETAILS AND SPECIFICATIONS
TOS SN-98 Cohasset Street
 North Hollywood, CA



ITEM NUMBERS

1. MANHOLE CONE - MODIFIED FLAT BOTTOM.
2. BOLTED RING & GRATE/COVER - DIAMETER & TYPE AS SHOWN. CLEAN CAST IRON WITH WORDING "STORM WATER ONLY" IN RAISED LETTERS. BOLTED IN 2 LOCATIONS AND SECURED TO CONE WITH MORTAR. RIM ELEVATION ±0.02' OF PLANS.
3. STABILIZED BACKFILL - TWO-SACK SLURRY MIX.
4. PRE-CAST LINER - 4000 PSI CONCRETE 48" ID. X 54" OD. CENTER IN HOLE AND ALIGN SECTIONS TO MAXIMIZE BEARING SURFACE.
5. INLET PIPE (BY OTHERS). SEE SEPARATE PLAN FOR INVERT ELEVATIONS.
6. GRADED BASIN OR PAVING (BY OTHERS).
7. COMPACTED BASE MATERIAL, IF REQUIRED (BY OTHERS).
8. FREEBOARD DEPTH VARIES WITH INLET PIPE ELEVATION. INCREASE PRIMARY AND SECONDARY CHAMBER DEPTHS AS NEEDED TO MAINTAIN ALL INLET PIPE ELEVATIONS ABOVE RISER PIPE.
9. NON-WOVEN GEOTEXTILE SLEEVE - MIRAFI 140 NL. MIN. 6 FT Ø. HELD APPROX. 10 FEET OFF THE BOTTOM OF EXCAVATION.
10. PUREFLO® DEBRIS SHIELD - ROLLED 16 GA. STEEL X 24" LENGTH WITH VENTED ANTI-SIPHON AND INTERNAL 0.265" MAX. SWO FLATTENED EXPANDED STEEL SCREEN X 12" LENGTH. FUSION BONDED EPOXY COATED.
11. MIN. 6" Ø DRILLED SHAFT.
12. RISER PIPE - SCH. 40 PVC MATED TO DRAINAGE PIPE AT BASE SEAL.
13. DRAINAGE PIPE - ADS HIGHWAY GRADE OR SCH. 40 PVC WITH TRI-A COUPLER. SUSPEND PIPE DURING BACKFILL OPERATIONS. DIAMETER AS NOTED.
14. ROCK - WASHED, SIZED BETWEEN 3/8" AND 1-1/2".
15. FLOFAST® DRAINAGE SCREEN - SCH. 40 PVC 0.120" SLOTTED WELL SCREEN WITH 32 SLOTS PER ROW/FT. WITH TRI-B COUPLER. OVERALL LENGTH VARIES, UP TO 120" WITH TRI-B COUPLER.
16. ABSORBENT - HYDROPHOBIC PETROCHEMICAL SPONGE. MIN. 128 OZ. CAPACITY. TYPICAL, 2 PER CHAMBER.
17. FABRIC SEAL - U.V. RESISTANT GEOTEXTILE - TO BE REMOVED BY CUSTOMER AT PROJECT COMPLETION. GRATED ONLY.
18. MIN. 4" Ø DRILLED SHAFT.
19. REFER TO "CMU BLOCK LAYOUT DETAIL" HEREON.
20. 6 PERFORATIONS MINIMUM PER FOOT, 2 ROWS MINIMUM.
21. NOT USED.
22. INTAKE SCREEN - 8" Ø SCH. 40 PVC 0.120" MODIFIED SLOTTED WELL SCREEN WITH 32 SLOTS PER ROW/ FT. 48" OVERALL LENGTH WITH TRI-C END CAP.
23. VENTED ANTI-SIPHON INTAKE.
24. CONNECTOR PIPE - 8" Ø SCH. 40 PVC.

*Intake and connector pipes modified from 4" to 8" diameter for LASAN projects.

DETAIL: DPD-4-SS-SP	REVISED BY: GOP	SCALE: N.T.S
DRAWN ON: 03-17-20	REVISED DATE: 3-17-20	

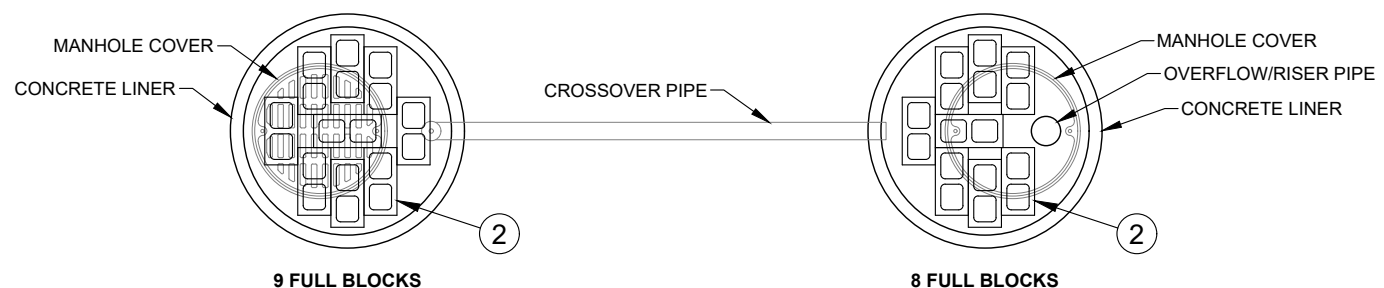
AZ Lic. ROC070465 A, ROC047067 B-4, ADWR 363
 CA Lic. 886759, C-42, C-57, HAZ
 Also licensed in the following states: MT, NM, NV, OR, TX, UT, and WA.
 U.S. Patent No. 4,923,330 -™ Trademark 1974, 1990, 2004

Manufactured and Installed by

TORRENT RESOURCES
 An evolution of McGuckin Drilling
 www.torrentresources.com
 CALIFORNIA 909-829-0740
 ARIZONA 602-268-0785

PRIMARY CHAMBER

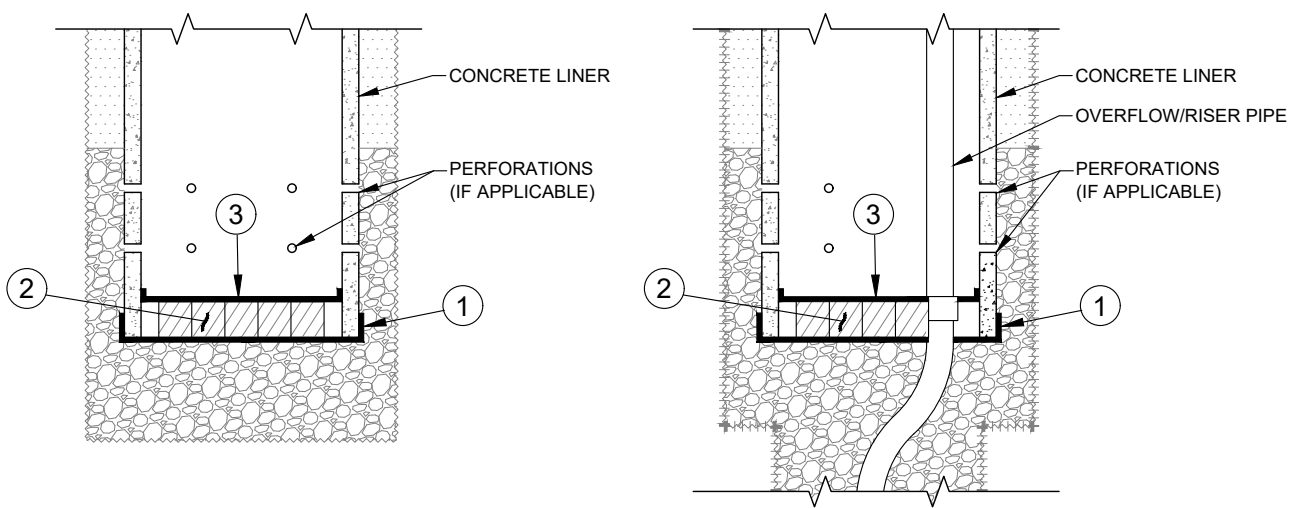
DRYWELL CHAMBER



PLAN VIEW
N.T.S

NOTES:

- ① LINE BOTTOM OF WELLS WITH MIRAFI GEOTEXTILE FABRIC 140NL, OR APPROVED EQUAL. FASTEN LINER TO OUTER WELL.
- ② INSTALL STANDARD 8"x8"x16" CMU BLOCKS AT BOTTOM OF DRYWELL. ASSUME A TOTAL OF 9 BLOCKS WILL BE NEEDED FOR EACH PRIMARY CHAMBER AND 8 BLOCKS FOR EACH DRYWELL CHAMBER.
- ③ PLACE MIRAFI GEOTEXTILE FABRIC 140NL, OR APPROVED EQUAL, LOOSELY ON TOP OF CMU BLOCKS TO KEEP SILTS AND DEBRIS FROM IMPACTING OPENINGS IN THE BLOCKS AND FABRIC IN THE BOTTOM. DO NOT SECURE, FABRIC TO BE REMOVED AND REPLACED WHEN SERVICE IS REQUIRED.



PROFILE VIEW
N.T.S

DRAWING TITLE

CMU BLOCK LAYOUT FOR FABRIC AT CHAMBER BOTTOM

DATE

JUNE 2019

THIS PROPRIETARY INFORMATION IS THE PROPERTY OF TORRENT RESOURCES, INC. IT SHALL NOT BE SHOWN, RELEASED, OR REPRINTED WITHOUT THE EXPRESS WRITTEN PERMISSION OF TORRENT RESOURCES, INC.

AZ Lic. ROC070465 A, ROC047067 B-4, ADWR 363
CA Lic. 886759, C-42, C-57, HAZ.
Also licensed in the following states: MT, NM, NV, OR, TX, UT, and WA.



An evolution of McGuckin Drilling
www.torrentresources.com

CALIFORNIA 909-829-0740
ARIZONA 602-268-0785
NEVADA 702-366-1234